



Plan to Empower.

REPORT



Montgomery County Public Schools

Enrollment Projections

April 5, 2011

Montgomery County Public Schools

ACKNOWLEDGEMENTS

The development of these enrollment projections required input from all facets of Montgomery County. We would like to acknowledge the following entities for updating the data necessary to complete this report.

Town of Blacksburg, Planning & Engineering Department
Montgomery County, Planning & GIS Services
Town of Christiansburg, Planning Director

We would like to extend our appreciation to the Montgomery County School Board for choosing **DeJONG-HEALY** to assist them in updating enrollment projections for the District. In addition, Dan Berenato, Director of Facilities & Planning, and his staff were invaluable in collecting information presented in this document.

Tracy V. Healy, REFP
President
DeJONG-HEALY

Ann Hussey, REFP
Project Director
DeJONG-HEALY

TABLE OF CONTENTS

	Page #
Introduction	3
Actual Versus Projected Enrollment	4
Enrollment Projection Methodologies	6
Demographics	11
Housing Information	21
Live Birth Data	24
Historical Enrollment	25
District-wide	
Auburn Strand	
Blacksburg Strand	
Christiansburg Strand	
Shawsville Strand	
Private and Home Schooled Students	34
Student Migration and Retention	36
Current Distribution Across Grade Levels	37
Survival Ratios	38
Enrollment Projections	39
District-wide – Low Projection	
District-wide – Moderate Projection [Most Likely]	
District-wide – High Projection	
Auburn Strand	
Blacksburg Strand	
Christiansburg Strand	
Shawsville Strand	
Conclusion	47

Montgomery County Public Schools

INTRODUCTION

Montgomery County Public Schools, in an effort to keep enrollment projections current and have accurate data for facility planning, requested that **DeJONG-HEALY** provide student enrollment projections, which they have developed and updated annually since 2000. The purpose of this document is to assist the Montgomery County Public Schools in projecting future decline or growth, and then to assess the impact on the school facilities and student population.

The County is divided into four strands: Auburn, Blacksburg, Christiansburg, and Shawsville. This report contains ten-year enrollment projections for the Montgomery County Public Schools in total and by strand. Enrollment projections were developed by analyzing the following data:

- ▶ Live birth data
- ▶ Historical enrollment
- ▶ New housing

The information contained in this document will provide the District with a valuable planning tool and assist in determining the future direction of Montgomery County Public Schools.

Montgomery County Public Schools

ACTUAL VERSUS PROJECTED ENROLLMENT

Enrollment projections were developed for the Montgomery County Public Schools since 2000. The following charts compare the previously developed projections for the past two school years (since the latest enrollment projections) versus the actual enrollments for those years. Actual vs. projected enrollment for the 2009-10 and 2010-11 school year was within 25 and 214 students, respectively.

Grade	2009-10				2010-11			
	Proj.	Actual	+/-	% Acc.	Proj.	Actual	+/-	% Acc.
K	769	739	30	3.90%	738	765	-27	-3.66%
1	765	777	-12	-1.57%	753	733	20	2.66%
2	694	693	1	0.14%	755	729	26	3.44%
3	793	781	12	1.51%	689	660	29	4.21%
4	758	783	-25	-3.30%	785	761	24	3.06%
5	714	690	24	3.36%	795	753	42	5.28%
K - 5 Total	4,493	4,463	30	0.67%	4,515	4,401	114	2.52%
6	745	753	-8	-1.07%	695	659	36	5.18%
7	734	747	-13	-1.77%	772	747	25	3.24%
8	717	718	-1	-0.14%	758	724	34	4.49%
6 - 8 Total	2,196	2,218	-22	-1.00%	2,225	2,130	95	4.27%
9	843	884	-41	-4.86%	825	820	5	0.61%
10	732	706	26	3.55%	780	764	16	2.05%
11	677	688	-11	-1.62%	652	644	8	1.23%
12	657	636	21	3.20%	616	615	1	0.16%
9 - 12 Total	2,909	2,914	-5	-0.17%	2,873	2,843	30	1.04%
K - 12 Subtotal	9,598	9,595	3	0.03%	9,613	9,374	239	2.49%
Ungraded	0	28	-28	-100.00%	0	25	-25	-100.00%
Grand Total	9,598	9,623	-25	-0.26%	9,613	9,399	214	2.23%

Montgomery County Public Schools

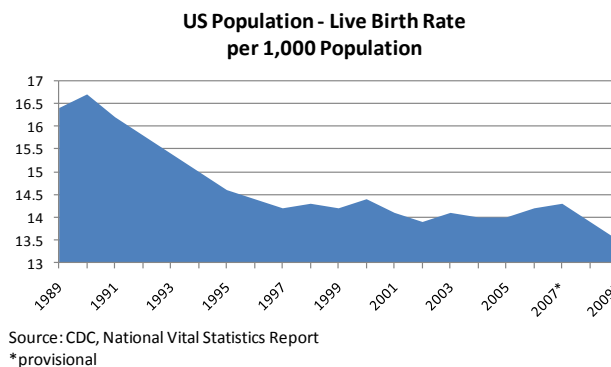
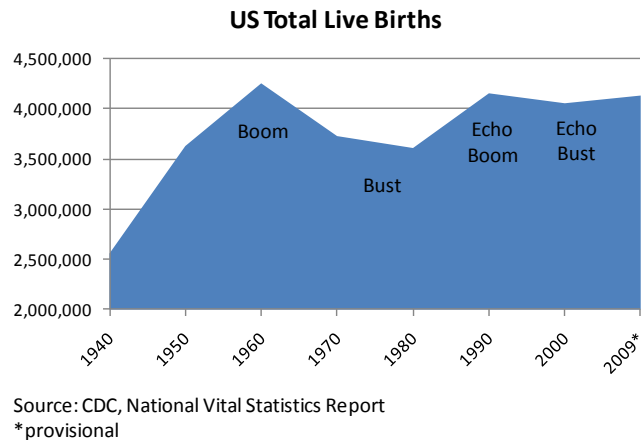
School	2010-11	2010-11 Most Likely Projection	Difference	% Difference
Auburn Strand				
Auburn ES	561	605	44	7.84%
Auburn MS	280	287	7	2.50%
Auburn HS	388	392	4	1.03%
Ungraded	5		-5	-100.00%
Auburn Total	1,234	1,284	50	4.05%
Blacksburg Strand				
Gilbert Linkous ES	353	349	-4	-1.13%
Harding Ave. ES	268	266	-2	-0.75%
Kipps ES	509	505	-4	-0.79%
Margaret Beeks ES	404	403	-1	-0.25%
Price's Fork ES	201	224	23	11.44%
Blacksburg MS	826	881	55	6.66%
Blacksburg HS	1,070	1,110	40	3.74%
Ungraded	6		-6	-100.00%
Blacksburg Total	3,637	3,738	101	2.78%
Christiansburg Strand				
Christiansburg PS	441	456	15	3.40%
Christiansburg ES	423	449	26	6.15%
Belview ES	227	248	21	9.25%
Falling Branch ES	549	549	0	0.00%
Christiansburg MS	808	832	24	2.97%
Christiansburg HS	1,082	1,078	-4	-0.37%
Ungraded	9		-9	-100.00%
Christiansburg Total	3,539	3,612	73	2.06%
Shawsville Strand				
Shawsville ES	0	260	260	#DIV/0!
Elliston-Lafayette ES	0	201	201	#DIV/0!
Eastern Montgomery ES	465	0		
Shawsville MS	216	225	9	4.17%
Eastern Montgomery HS	303	293	-10	-3.30%
Ungraded	5		-5	-100.00%
Shawsville Total	989	979	-10	-1.01%
Grand Total	9,399	9,613	214	2.28%

Montgomery County Public Schools

ENROLLMENT PROJECTION METHODOLOGIES

Introduction

Tracing the landscape of the country's public school enrollment back over the past fifty years reveals demographic, economic, and social changes. The United States as a whole continues to undergo major shifts in public student enrollment, due in large part to past events including the baby boom, the availability and use of birth control, and the development of suburbs. The baby boom of the late 1940s and 50s was followed by the baby bust of the 1960s and 70s. This gave rise to the echo baby boom of the 1980s, producing children who primarily graduated in the late 90s through 2007.



household. The live birth rate increased for the first time in several years in 1998 and increased again in 2000. However, the birth rate resumed a descending pattern in 2001 and reached an all-time low of 13.5 in 2009.

Nationwide, districts continue to experience the effects of the echo baby bust of the 1990s. From the 1950s to the 1970s, a dramatic downsizing of the family unit occurred. A direct result was the declining school enrollment of the 1970s and 1980s. As of the 2000 Census, the size of a family was at an all-time low of 3.14 persons. According to the American Community Survey 2009 Estimate, the average family size increased to 3.23 persons per

Montgomery County Public Schools

When projecting future enrollments, it will be vital to track the number of live births, the amount of new housing activity, and the change in household composition.

In addition, any of the following factors could cause a significant change in projected student enrollments:

- ▶ Boundary adjustments
- ▶ New school openings
- ▶ Changes/additions in program offerings
- ▶ Preschool programs
- ▶ Change in grade configuration
- ▶ Interest rates/unemployment shifts
- ▶ Magnet/Charter/Private school opening or closure
- ▶ Zoning changes
- ▶ Unplanned new housing activity
- ▶ Planned, but not built, housing

Obviously, certain factors can be gauged and planned for far better than others. For instance, it may be relatively straightforward to gather housing data from local builders regarding the total number of lots in a planned subdivision and calculate the potential student yield. However, planning for changes in the unemployment rate, and how these may either boost or reduce public school enrollment, proves more difficult. In any case, it is essential to gather a wide variety of information in preparation for producing enrollment projections.

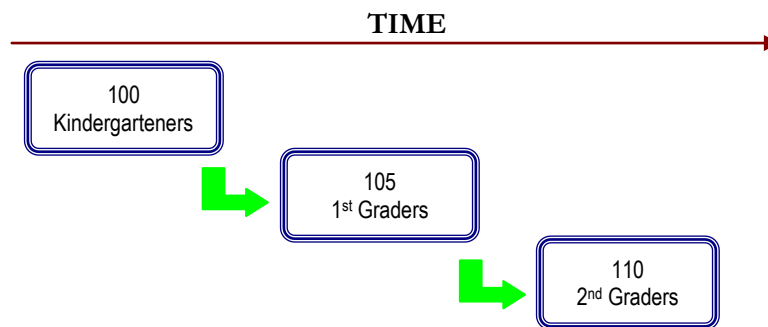
When looking ahead at a school district's enrollment over the next two, five, or ten years, it is helpful to approach the process from a global perspective. For example: How many new homes have been constructed each year? How many births have occurred each year in relation to the resident population? Is housing experiencing a turnover – if so, what is the composition of families moving in/out? Are more or less students attending private school or being home-schooled? What has the unemployment rate trend been over the past ten years? What new educational policies are in place now that could affect student enrollment figures?

The data sets generated from questions such as these have led to the development of general methodologies to project future student enrollments. They are as follows:

Montgomery County Public Schools

Cohort Survival Method

A cohort is a group of persons [in this case, students]. The cohort survival projection methodology uses previous live birth data and historical student enrollments to “age” a known population or cohort throughout the school grades. For instance, a cohort begins when a group of kindergarteners enrolls in grade K and moves to first grade the following year, second grade the next year, and so on.



A “survival ratio” is developed to track how this group of students grew or shrunk in number as they moved through the grade levels. By determining survival ratios for each grade transition [i.e., 1st to 2nd grade] over a ten-year period of time, patterns emerge and projection ratios can be developed to be used as a multiplier.

For example, if student enrollment has consistently increased from the 8th to the 9th grade over the past ten years, the survival ratios for each year would be greater than 100 percent. Through analysis of the survival ratios, the projection ratio is determined and is multiplied by the current 8th grade to develop a projection for next year's 9th grade.

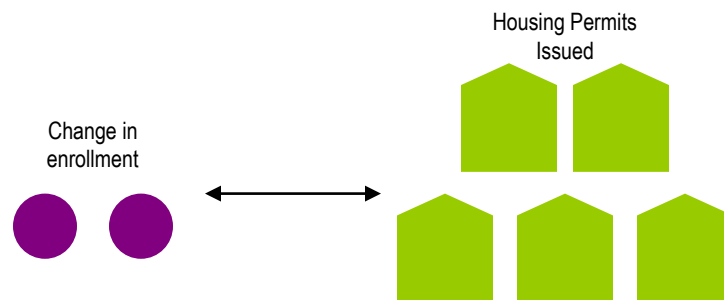
This methodology can be carried through to develop ten years of projection figures. Because there is not a grade cohort to follow for students coming into kindergarten, live birth counts are used to develop a survival ratio. Babies born five years previous to the kindergarten class are compared in number, and a ratio can be developed to project future kindergarten enrollments.

The cohort survival method is useful in areas where population is stable [relatively flat, growing steadily, or declining steadily], and where there have been no significant fluctuations in enrollment, births, and housing patterns from year to year.

Montgomery County Public Schools

Housing

Enrollment projections can also be determined by analyzing the housing data for the areas that make up a school district. Yield factors can be established by comparing the historic change in enrollment from year to year divided by the total number of building or occupancy permits issued. For example, if student enrollment has increased by approximately 100 students each year and approximately 200 building permits have been issued each year for the past ten years, then the yield factor would be approximately .5 students per building permit.



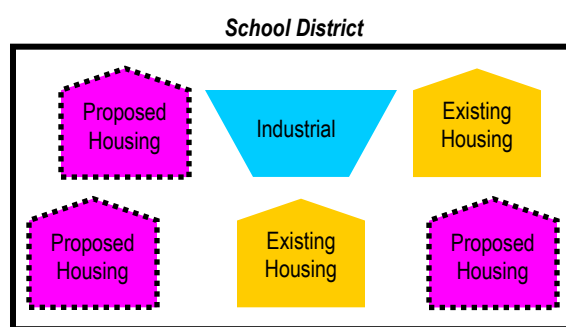
Once yield factors are established, the number of new students per year can be estimated by multiplying the yield factor by the number of projected new housing units. This method is effective when the rate of kindergarten enrollment far exceeds the live birth counts.

If housing demolitions are occurring in a district, these must also be taken into account. For instance, if housing demolitions/withdrawals have increased rapidly over recent years while new housing starts have remained relatively constant over many years, the conclusion may be that some of the new housing starts will simply be replacements for the families displaced by the demolitions. Of course, housing value and household composition would need to be further analyzed to confirm that this is indeed the case. It is possible that enrollment may remain flat or decline even though there is new housing occurring in the area.

Montgomery County Public Schools

Land-Saturation Analysis

Housing data also drives the land-saturation analysis enrollment methodology. In areas where there is a high rate of development and the future development patterns in the area are clear, a “build-out” scenario can be developed. The scenario takes into consideration the remaining acreage to be developed, planned rate of completion, zoning policies, density per acre, type of housing, and ratios of school-age children per household type. This method is particularly useful in areas experiencing rapid growth.



Geographic Information Systems

While not a methodology, the need for better tools and easier manipulation of data has led to a new industry standard in planning – GIS [Geographic Information Systems]. GIS technology allows school districts to quickly analyze countless data sets including birth data, housing information, and enrollment statistics.

When paired with enrollment projections, GIS becomes an invaluable information-management and decision-making tool. Often, county or city offices are already implementing GIS technology and data can be shared and expanded among these organizations in the district. GIS tables and maps are included within this report illustrating population, age, and income estimates and projections.

Montgomery County Public Schools

DEMOGRAPHICS

Illustrated in the charts below are general population characteristics and employment information for Montgomery County according to U.S. Census data.

Montgomery County General Population Characteristics	
Total Population, 2010	94,392
Population by Age, 2008	
Under 5 Years Old	4.8%
17 and Under	16.3%
18-64 Years Old	69.8%
65 and older	9.1%
Population by Race, 2008	
Caucasian	89.3%
African American	4.3%
American Indian and Alaska Native	0.2%
Asian	4.7%
Hispanic	2.0%
2 or more races	1.4%
Income	
Median Household Income, 2007	\$42,029
Per Capita Income, 1999	\$17,077
Educational Attainment, 2000	
High School Graduate	82.8%
Bachelor's Degree or Higher	35.9%

Source: U.S. Census

Montgomery County Industry	
Employed persons 16 years and over	34,250
Agriculture, forestry, and fisheries	659
Mining	65
Construction	1,667
Manufacturing, nondurable goods	2,044
Manufacturing, durable goods	3,765
Transportation	687
Communications and other public utilities	737
Wholesale trade	476
Retail trade	6,834
Finance, insurance, and real estate	1,179
Business and repair services	1,236
Personal services	851
Entertainment and recreation services	333
Health services	1,868
Educational services	8,939
Other professional and related services	1,810
Public administration	1,100

Source: US Census, 1990

Also included are block group estimates and projections provided by ESRI Business Information Solutions (ESRI BIS). ESRI BIS uses a time series of estimates from the U.S. Census Bureau that includes the latest estimates and intercensal estimates adjusted for error of closure. The Census Bureau's time series is consistent, but testing has revealed improved accuracy by using a variety of sources to track county population trends.

ESRI BIS also employs a time series of building permits and housing starts plus residential deliveries. Finally, local data sources that tested well against Census 2000 are reviewed. Data sources are integrated and then analyzed by Census Block Groups.

Montgomery County Public Schools

Sources of data include:

- ▶ Supplementary Surveys of the Census Bureau
- ▶ Bureau of Labor Statistics' (BLS) Local Area Unemployment Statistics
- ▶ BLS Occupational Employment Statistics
- ▶ InfoUSA
- ▶ U.S. Bureau of the Census' Current Population Survey
- ▶ National Planning Association Data Service

Below is a list of definitions as they appear on the U.S. Census Bureau website, to aid in interpretation of the following tables and maps.

Household:

A household includes all the people who occupy a housing unit as their usual place of residence.

Average family size:

A measure obtained by dividing the number of members of families by the total number of families (or family householders).

Family household (Family):

A family includes a householder and one or more people living in the same household who are related to the householder by birth, marriage, or adoption. All people who are related to the householder are regarded as members of his or her family. A family household may contain people not related to the householder, but those people are not included as part of the householder's family in census tabulations. Thus, the number of family households is equal to the number of families, but family households may include more members than do families. A household can contain only one family for purposes of census tabulations. Not all households contain families since a household may comprise a group of unrelated people or one person living alone.

Householder:

The person, or one of the people, in whose name the home is owned, being bought, or rented. If there is no such person present, any household member 15 years old and over can serve as the householder for the purposes of the census. Two types of householders are distinguished: a family householder and a nonfamily householder. A family householder is a householder living with one or more people related to him or her by birth, marriage, or adoption. The householder and all people in the household related to him are family members. A nonfamily householder is a householder living alone or with nonrelatives only.

Montgomery County Public Schools

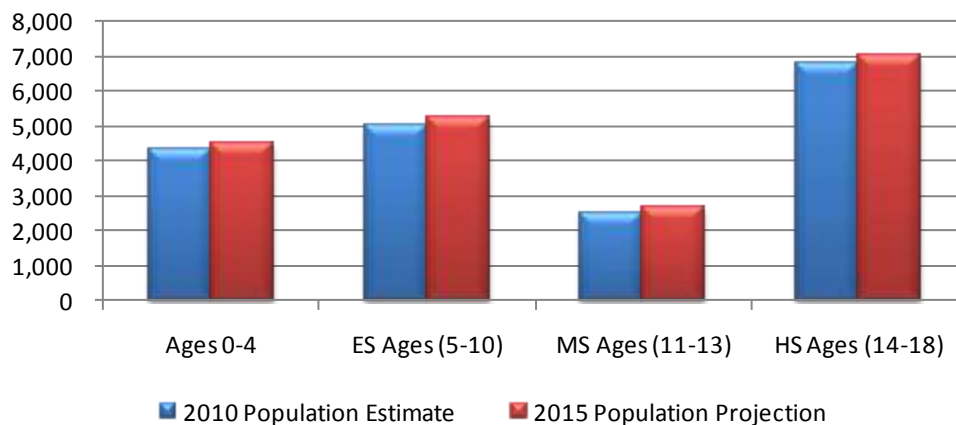
The following tables illustrate the current estimates and 5-year population projections based on block groups that comprise the school district, indicating areas of current and projected growth. The tables have been developed to determine selected age group projections and projections for household income and family size.

The total population in the District is 91,816. This population is projected to increase by 4,328 people, or approximately 5% over a 5-year period. The 0-18 year-old population in the District currently totals 18,624. This population is projected to increase by 828 children, or approximately 4 percent.

Montgomery County Public School District	2010 Population Estimate	2015 Population Projection
Total Population	91,816	96,144
Ages 0-4	4,331	4,480
ES Ages (5-10)	5,002	5,267
MS Ages (11-13)	2,509	2,692
HS Ages (14-18)	6,782	7,013
Total Ages 0-18	18,624	19,452
Average Age	33	34

Source: ESRI BIS

**Montgomery County Public School District
Population Estimates & Projections by Age Group**



Montgomery County Public Schools

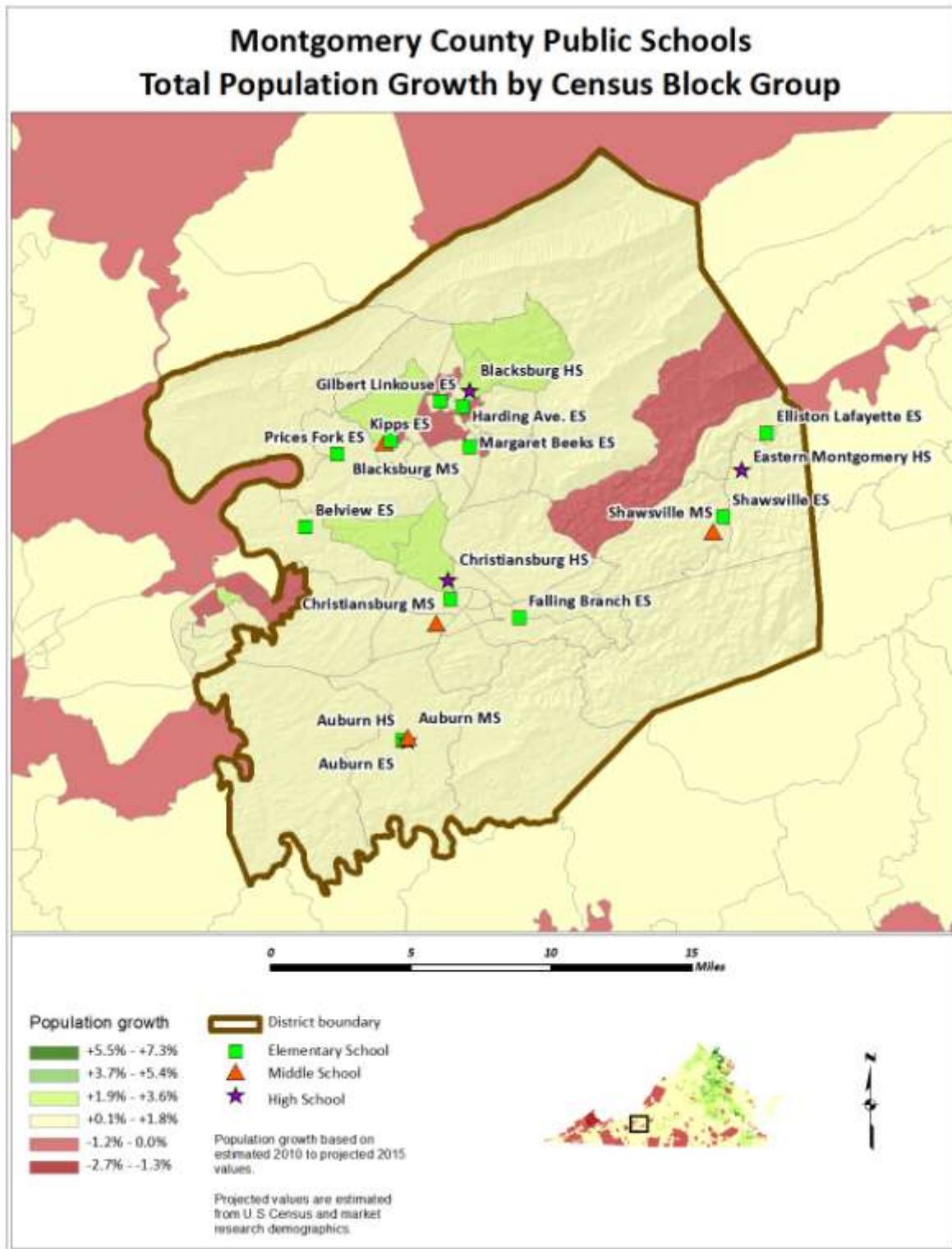
Average household and family income in the District is projected to increase by 17% and 16%, respectively over a 5-year period. Average family size is projected to decrease slightly.

Montgomery County Public School District	2010 Population Estimate	2015 Population Projection
Average Household Income	\$56,290	\$65,714
Average Family Size	2.79	2.78
Average Family Income	\$68,733	\$79,522

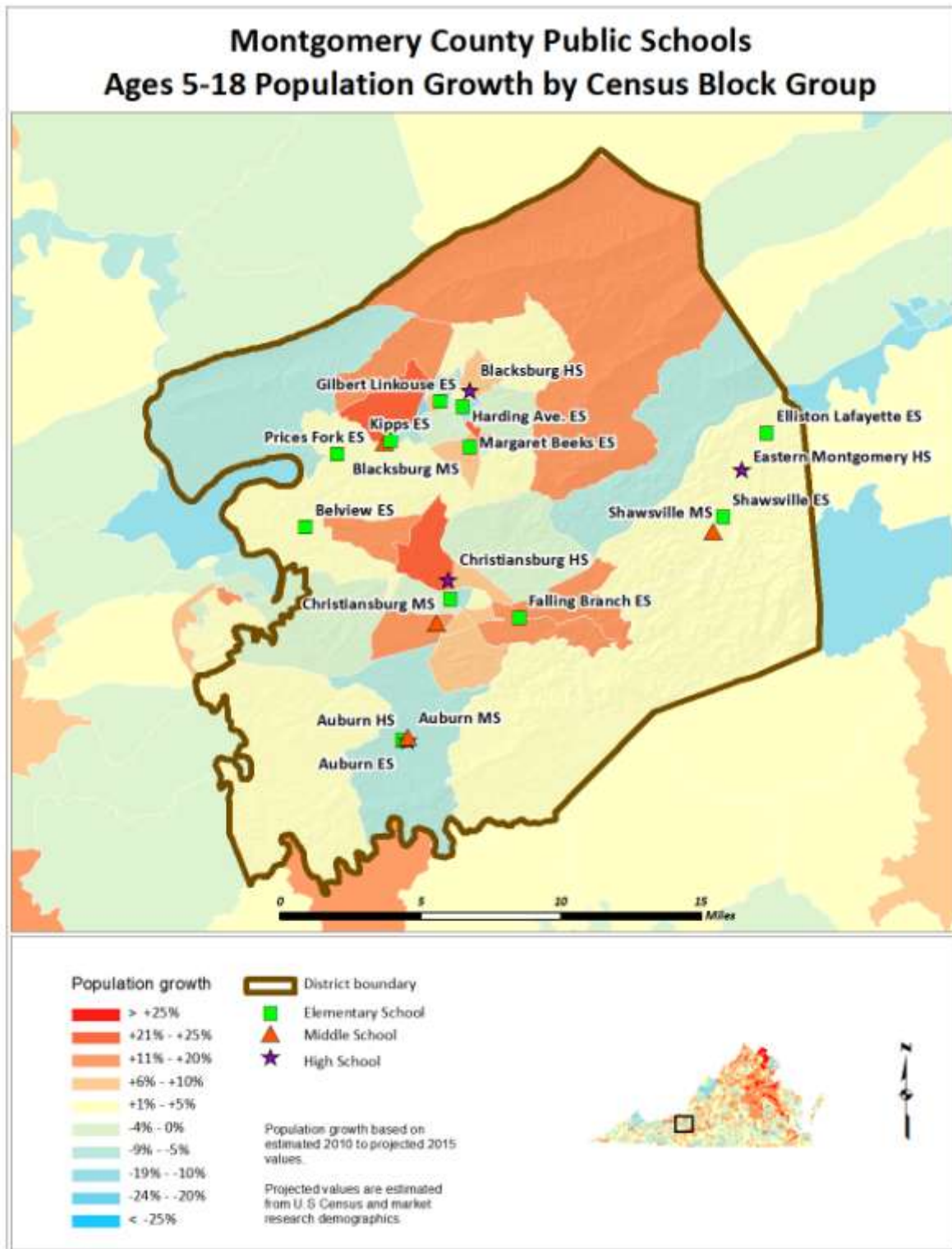
Source: ESRI BIS

The maps on the following pages illustrate the data identified in the tables. The color coding identifies areas within the District that may be increasing or decreasing at different rates than others.

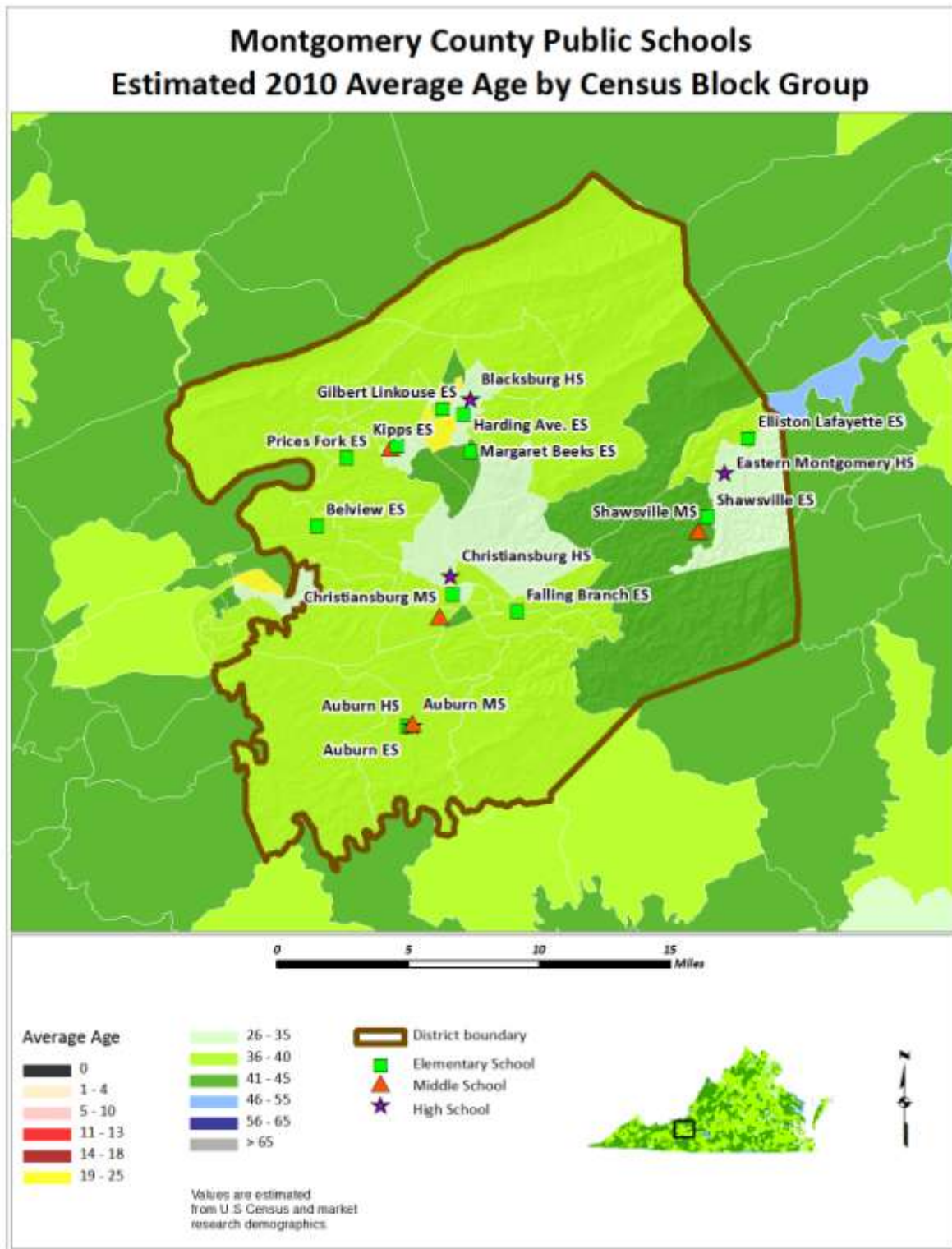
Montgomery County Public Schools



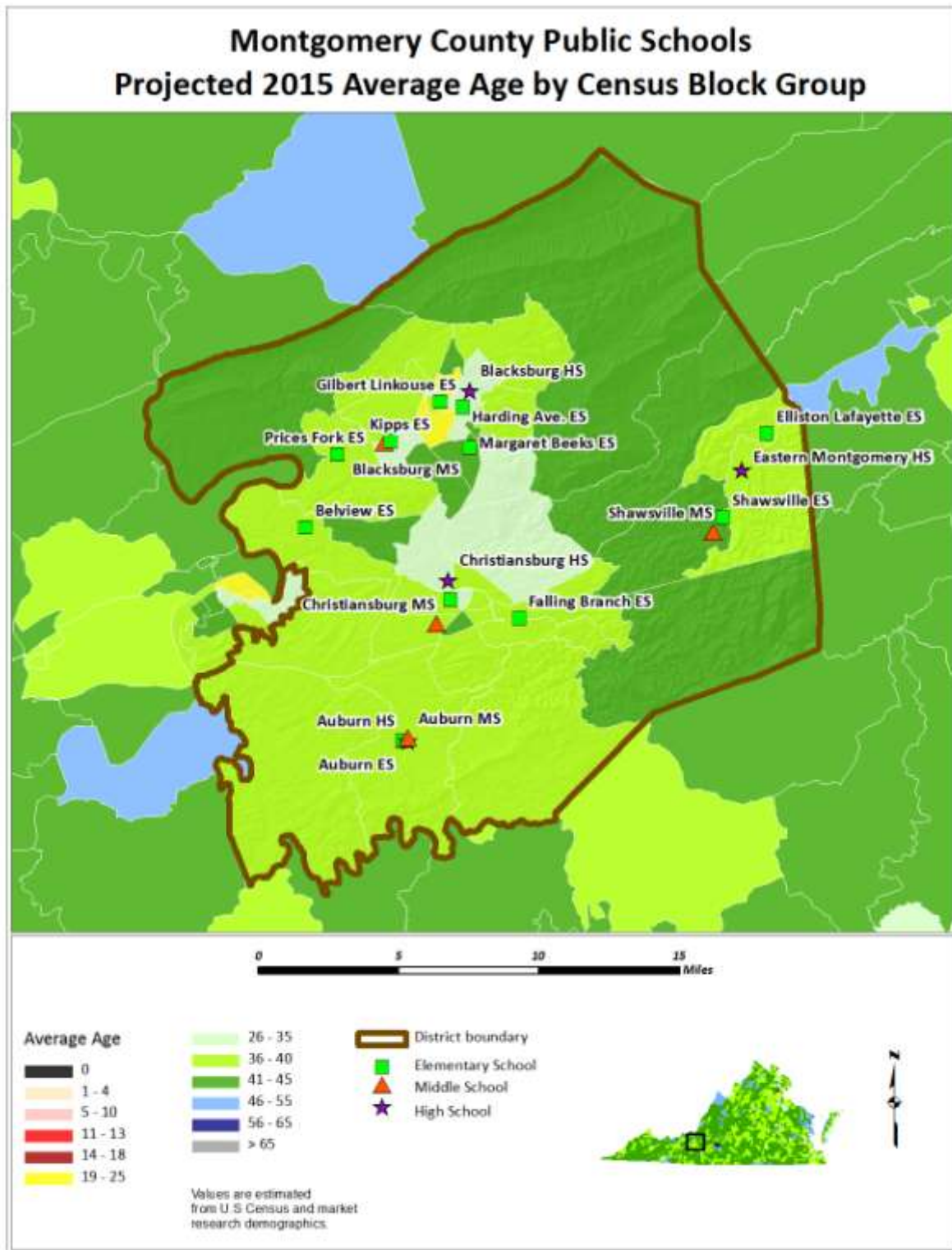
Montgomery County Public Schools



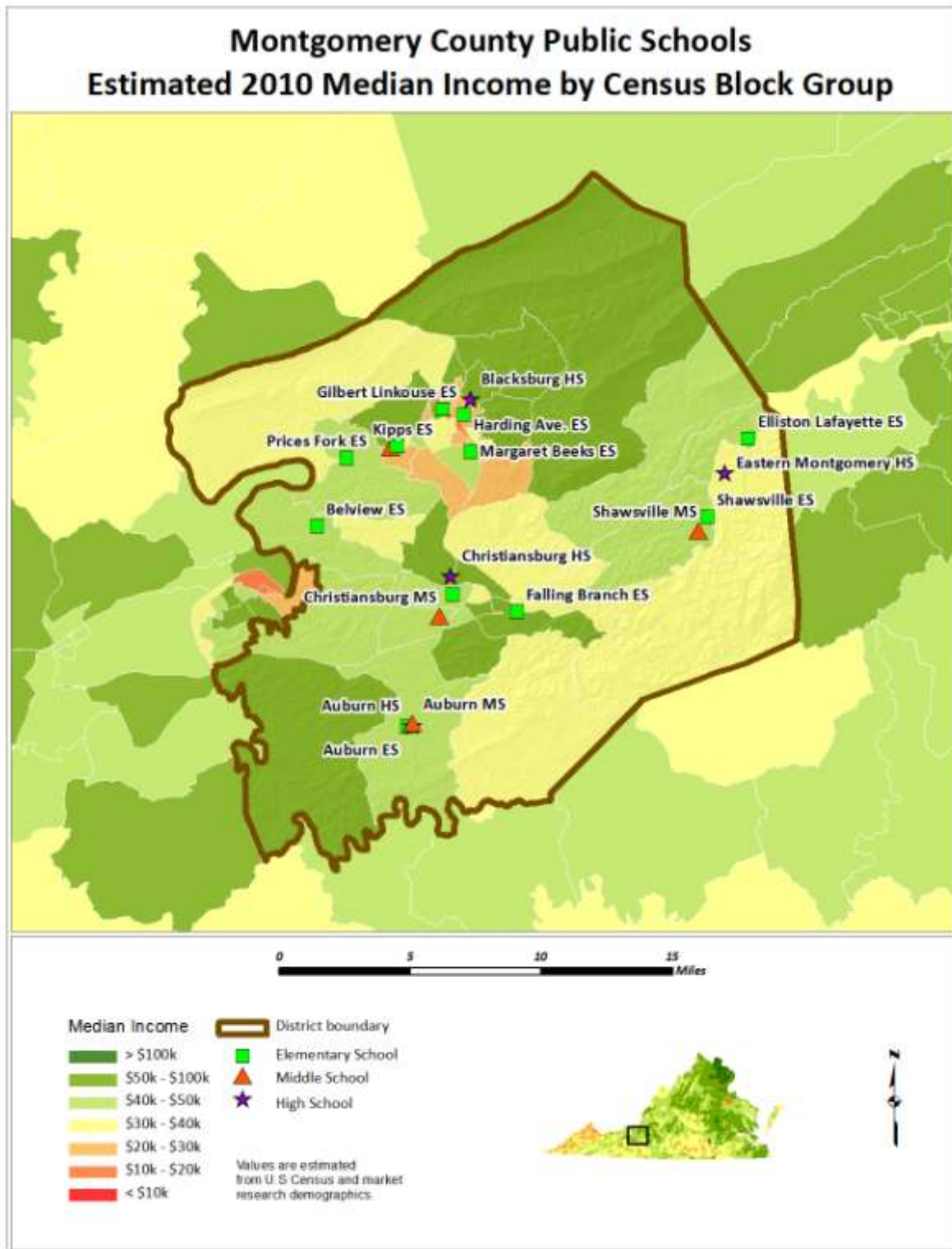
Montgomery County Public Schools



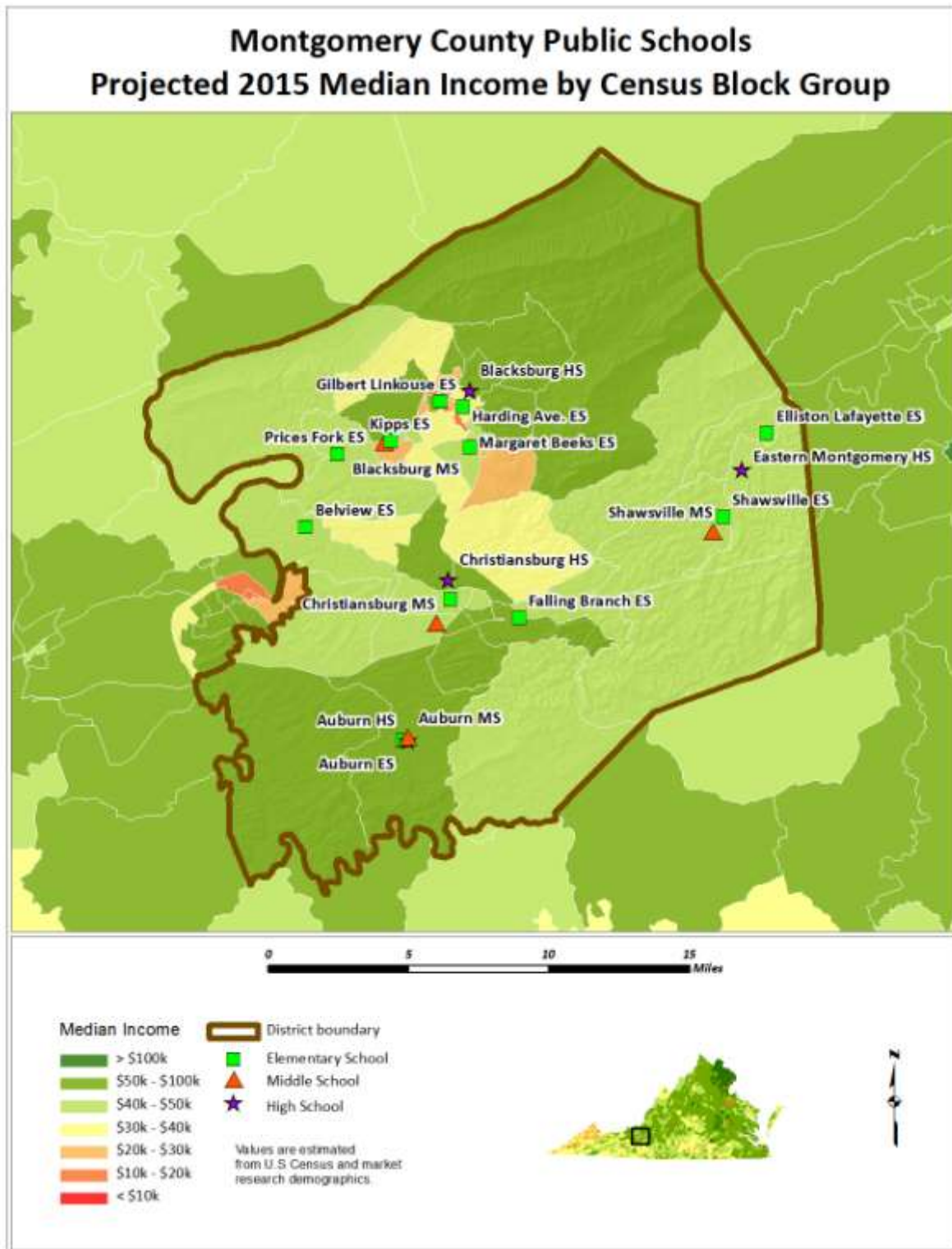
Montgomery County Public Schools



Montgomery County Public Schools



Montgomery County Public Schools



Montgomery County Public Schools

HOUSING INFORMATION

In developing enrollment projections, several factors are taken into consideration, including historical enrollment, historical building permit data, live birth counts, and student retention. The following table illustrates the new residential housing permits issued in Montgomery County from 2000 to 2010. The total number of single-family building permits peaked in 2005 at 714 permits and then declined over the next five years.

# of Building Permits Issued for Single-Family Dwellings				
Year	Town of Blacksburg	Town of Christiansburg*	Unincorporated Montgomery Co.	Montgomery Co.
2000	49	121	116	286
2001	62	148	150	360
2002	195	198	189	582
2003	120	159	192	471
2004	129	275	171	575
2005	168	380	166	714
2006	226	289	157	672
2007	75	206	105	386
2008	149	131	64	344
2009**	63	82	109	254
2010**	21	53	75	149

Source: SOCDS Building Permits Database; **Town of Blacksburg; *Town of Christiansburg; **Montgomery Co.

# of Building Permits Issued for Multi-Family Dwellings				
Year	Town of Blacksburg	Town of Christiansburg*	Unincorporated Montgomery Co.	Montgomery Co.
2000	54	10	2	66
2001	48	4	2	54
2002	53	0	0	53
2003	22	21	2	45
2004	14	52	6	72
2005	12	0	0	12
2006	0	34	0	34
2007	242	24	0	266
2008	468	32	0	500
2009**	52	2	0	54
2010**	0	50	0	50

Source: SOCDS Building Permits Database; **Town of Blacksburg; *Town of Christiansburg; **Montgomery Co.

Montgomery County Public Schools

According to information provided by the Town of Christiansburg, the following subdivisions are under construction in the District:

- New River Village – 189 single-family units
- Villas at Pepper Ferry, Ph. II – 72 condo units
- Oak Tree Townhomes, Phases 7-10
- Windsor Estates – 92 single-family units
- Lions Gate Planned Residential Community, Ph. II – 43 single-family units
- Kelseywood Subdivision – 53 single-family units
- Pepper's Crossing – 23 single-family lots
- Robin Hood Estates, Ph. I – 63 single-family units
- Robin Hood Estates, Ph. II – 32 single-family units
- Windmill Hills, Phase 14 – 16 single-family lots
- Slate Creek Commons – 48 duplex units
- Circle Drive Townhomes – 8 new townhomes, 1 existing house
- Hillside Apartments – 80 apartment units
- Cambria Crossing, Ph. I – 11 single-family units, 46 townhouse units
- Mink Street Subdivision/Silver Lake Resubdivision – 6 single-family units
- Seneca Springs, Ph. I-II – single-family lots 1-44
- Kensington - approximately 127 single-family units (Town approved), 158 single-family units and 36 townhouses (County approved)
- Conner Mobile Home Park Expansion – 11 units
- Sturgill Estates – 38 single-family units
- Depot Street Townhouses – 11 townhouse units
- Melinda's Melody – 48 apartment units

Montgomery County Public Schools

According to information provided by the Town of Christiansburg, the following subdivisions are under review/permit pending in the District:

- Windmill Hills, Phase 15
- Cambria Crossing, Ph. II – lots 58-94
- Seneca Springs, Ph. III – single-family lots 45-84
- Shaffer Drive Townhouses – 7 townhouse units
- Midway Plaza Townhouses – 22 townhouse units
- Oak Tree Townhomes – 200 townhouse units
- Agee Street Subdivision – 18 duplexes
- Windsong Heights, Ph. II – 17 single-family units

Montgomery County Public Schools

LIVE BIRTH DATA

Utilization of live birth data is recommended when projecting future kindergarten enrollments. This data provides a helpful overall trend. Large bubbles in birth counts can be planned for and anticipated by the District.

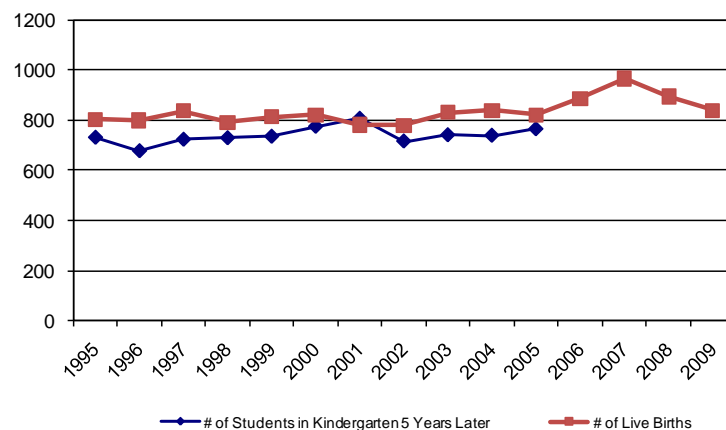
There is a direct correlation between the number of children born and the number of students that appear in school 5-6 years later. The following tables and chart track this phenomenon.

Montgomery County		Montgomery County Public Schools	
Year	# of Live Births	5 Years Later	# of Students in Kindergarten
1995	803	2000-01	731
1996	799	2001-02	677
1997	838	2002-03	723
1998	791	2003-04	729
1999	814	2004-05	735
2000	822	2005-06	775
2001	782	2006-07	807
2002	779	2007-08	716
2003	832	2008-09	741
2004	840	2009-10	739
2005	821	2010-11	765
2006	887		
2007	967		
2008	895		
2009	840		

Source: Montgomery County Public Schools

Source: Virginia Department of Health, Office of Vital Records and Health Statistics

**Montgomery County Live Births
Compared to MCPS Kindergarten Enrollment**



Montgomery County Public Schools

HISTORICAL ENROLLMENT

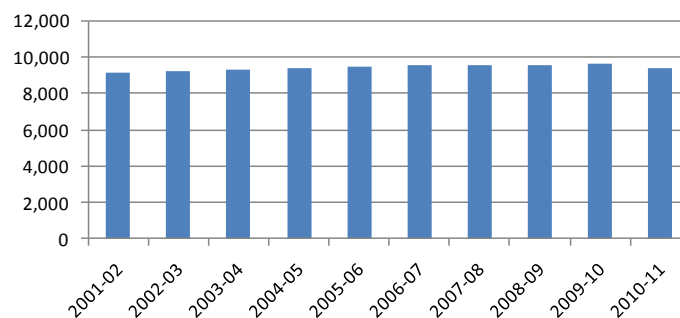
Based on our experience, it is helpful to gather ten years of historical enrollment figures. This gives a full view of year-to-year growth over a long period of time and allows for an analysis of trends. Also, elementary, middle, and high school levels can be better tracked for patterns and stable cohort survival ratios can be determined. The following tables and charts illustrate historical enrollment for Montgomery County Public Schools by grade, grade level, and strand. Historical enrollment is based on the September 30 enrollment figures for each year.

From 2001-02 to 2009-10, the Montgomery County Public School District enrollment grew by 494 students. This year, however, enrollment declined by 224 students from last year.

Grade	2001-02	2002-03	2003-04	2004-05	2005-06	2006-07	2007-08	2008-09	2009-10	2010-11
K	677	723	729	735	775	807	716	741	739	765
1	727	711	749	728	734	772	819	717	777	733
2	677	698	698	703	722	709	753	790	693	729
3	670	673	725	698	707	708	705	768	781	660
4	736	672	679	730	681	696	735	689	783	761
5	716	731	700	697	725	694	721	751	690	753
K - 5 Total	4,203	4,208	4,280	4,291	4,344	4,386	4,449	4,456	4,463	4,401
6	735	715	749	713	699	718	700	725	753	659
7	722	741	732	764	721	716	737	710	747	747
8	705	733	774	729	782	721	724	757	718	724
6 - 8 Total	2,162	2,189	2,255	2,206	2,202	2,155	2,161	2,192	2,218	2,130
9	783	773	817	883	829	864	826	829	884	820
10	735	710	682	747	791	762	785	742	706	764
11	651	684	627	637	703	738	686	715	688	644
12	582	610	659	602	601	638	663	612	636	615
9 - 12 Total	2,751	2,777	2,785	2,869	2,924	3,002	2,960	2,898	2,914	2,843
Ungraded	13	17	10	13	15	14	21	23	28	25
Grand Total	9,129	9,191	9,330	9,379	9,485	9,557	9,591	9,569	9,623	9,399

Source: Montgomery County Public Schools

**Montgomery County Public Schools
Historical Enrollment**



Montgomery County Public Schools

Auburn Strand Historical Enrollment

Following is the Montgomery County Public Schools' Auburn Strand historical enrollment from the 2001-02 school year to 2010-11.

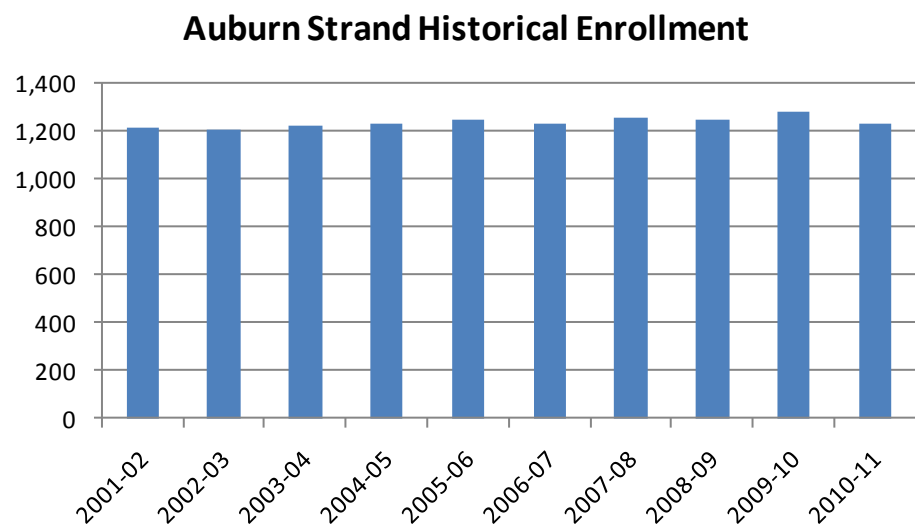
Auburn Strand Historical Enrollment										
Grade	2001-02	2002-03	2003-04	2004-05	2005-06	2006-07	2007-08	2008-09	2009-10	2010-11
K	93	70	93	101	107	96	87	97	97	90
1	102	89	74	98	102	107	97	90	100	92
2	94	102	93	71	93	107	113	90	92	87
3	96	92	100	97	70	92	100	112	90	84
4	107	103	82	100	90	73	95	96	122	88
5	119	108	105	93	98	86	80	92	101	120
K - 5 Total	611	564	547	560	560	561	572	577	602	561
6	89	117	106	112	90	95	85	76	96	99
7	85	87	122	105	110	87	99	88	83	96
8	88	91	90	116	113	103	90	103	92	85
6 - 8 Total	262	295	318	333	313	285	274	267	271	280
9	97	86	98	105	137	131	120	103	124	106
10	113	87	86	83	93	115	124	113	94	107
11	74	109	77	83	71	81	94	94	101	89
12	57	67	98	67	73	59	74	85	81	86
9 - 12 Total	341	349	359	338	374	386	412	395	400	388
Ungraded	1	0	0	0	1	2	1	5	6	5
Grand Total	1,215	1,208	1,224	1,231	1,248	1,234	1,259	1,244	1,279	1,234

Source: Montgomery County Public Schools

School	2001-02	2002-03	2003-04	2004-05	2005-06	2006-07	2007-08	2008-09	2009-10	2010-11
Auburn ES	611	564	547	560	560	561	572	577	602	561
Auburn MS	262	295	318	333	313	285	274	267	271	280
Auburn HS	341	349	359	338	374	386	412	395	400	388
Ungraded	1	0	0	0	1	2	1	5	6	5
Grand Total	1,215	1,208	1,224	1,231	1,248	1,234	1,259	1,244	1,279	1,234

Source: Montgomery County Public Schools

Montgomery County Public Schools



Montgomery County Public Schools

Blacksburg Strand Historical Enrollment

Following is the Montgomery County Public Schools' Blacksburg Strand historical enrollment from the 2001-02 school year to 2010-11.

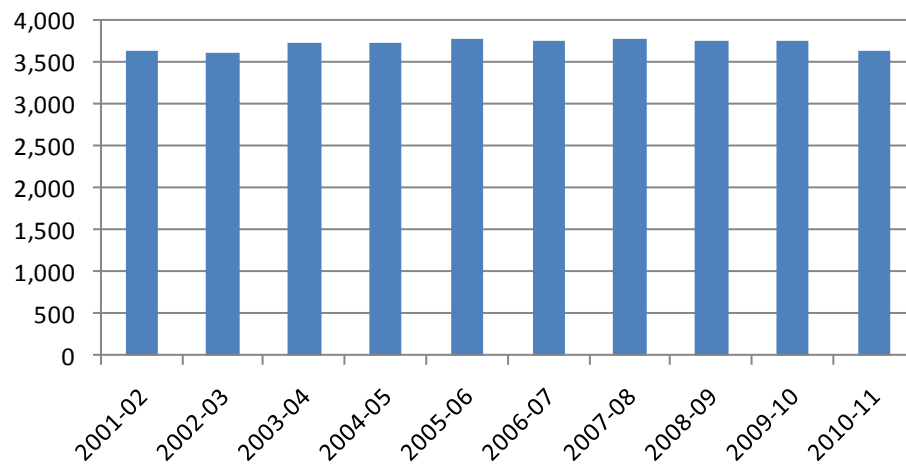
Blacksburg Strand Historical Enrollment										
Grade	2001-02	2002-03	2003-04	2004-05	2005-06	2006-07	2007-08	2008-09	2009-10	2010-11
K	237	282	303	277	282	323	299	286	273	317
1	280	255	292	309	275	287	325	286	314	276
2	249	264	264	282	307	269	274	315	278	289
3	230	239	276	270	298	296	272	277	309	276
4	297	229	261	277	265	290	306	273	283	303
5	275	292	244	269	286	273	290	315	269	274
K - 5 Total	1,568	1,561	1,640	1,684	1,713	1,738	1,766	1,752	1,726	1,735
6	297	272	310	252	271	280	277	292	311	248
7	298	296	295	312	261	262	292	285	289	302
8	306	293	316	289	319	259	270	288	290	276
6 - 8 Total	901	861	921	853	851	801	839	865	890	826
9	324	326	335	347	320	328	287	293	317	301
10	292	298	295	307	323	307	315	276	267	292
11	283	285	262	279	293	300	276	301	265	242
12	257	265	266	255	267	275	284	255	268	235
9 - 12 Total	1,156	1,174	1,158	1,188	1,203	1,210	1,162	1,125	1,117	1,070
Ungraded	6	10	5	9	6	6	10	10	10	6
Grand Total	3,631	3,606	3,724	3,734	3,773	3,755	3,777	3,752	3,743	3,637

Source: Montgomery County Public Schools

School	2001-02	2002-03	2003-04	2004-05	2005-06	2006-07	2007-08	2008-09	2009-10	2010-11
Gilbert Linkous ES	287	290	318	343	345	357	370	360	345	353
Harding Ave. ES	231	208	228	217	226	242	239	258	263	268
Kipps ES	484	480	492	503	536	529	539	539	499	509
Margaret Beeks ES	375	377	398	423	404	399	408	397	398	404
Price's Fork ES	191	206	204	198	202	211	210	198	221	201
Blacksburg MS	901	861	921	853	851	801	839	865	890	826
Blacksburg HS	1,156	1,174	1,158	1,188	1,203	1,210	1,162	1,125	1,117	1,070
Ungraded	6	10	5	9	6	6	10	10	10	6
Grand Total	3,631	3,606	3,724	3,734	3,773	3,755	3,777	3,752	3,743	3,637

Source: Montgomery County Public Schools

Montgomery County Public Schools

Blacksburg Strand Historical Enrollment

Montgomery County Public Schools

Christiansburg Strand Historical Enrollment

Following is the Montgomery County Public Schools' Christiansburg Strand historical enrollment from the 2001-02 school year to 2010-11.

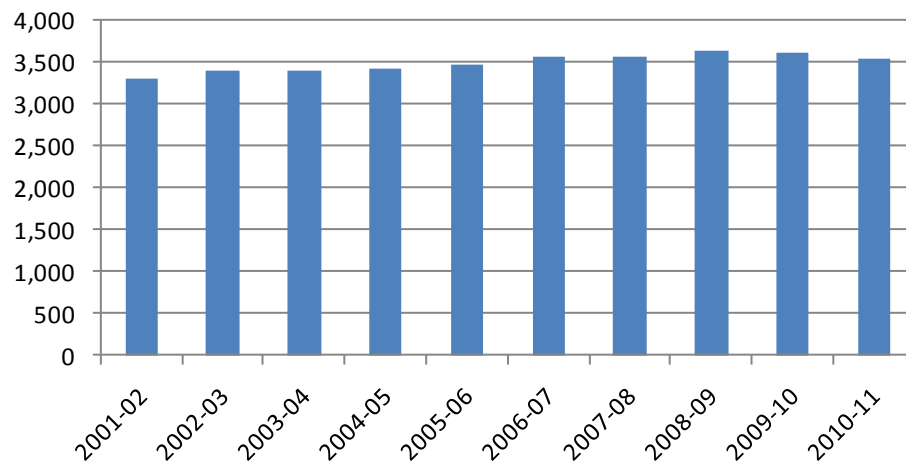
Christiansburg Strand Historical Enrollment										
Grade	2001-02	2002-03	2003-04	2004-05	2005-06	2006-07	2007-08	2008-09	2009-10	2010-11
K	285	300	272	289	298	305	260	297	294	281
1	274	295	296	252	286	292	307	263	292	283
2	270	266	277	275	260	274	294	299	248	284
3	256	272	277	267	268	257	278	313	297	224
4	247	250	269	279	258	265	265	257	306	280
5	242	250	254	267	264	265	280	280	253	288
K - 5 Total	1,574	1,633	1,645	1,629	1,634	1,658	1,684	1,709	1,690	1,640
6	268	246	250	250	272	265	272	285	274	243
7	259	284	237	265	250	296	277	279	293	278
8	235	270	279	245	268	257	291	290	277	287
6 - 8 Total	762	800	766	760	790	818	840	854	844	808
9	289	280	288	328	291	310	298	344	352	338
10	246	250	232	265	288	271	262	257	264	284
11	225	211	223	208	244	270	248	247	241	241
12	205	221	231	223	204	228	228	215	218	219
9 - 12 Total	965	962	974	1,024	1,027	1,079	1,036	1,063	1,075	1,082
Ungraded	6	5	4	4	8	5	7	5	7	9
Grand Total	3,307	3,400	3,389	3,417	3,459	3,560	3,567	3,631	3,616	3,539

Source: Montgomery County Public Schools

School	2001-02	2002-03	2003-04	2004-05	2005-06	2006-07	2007-08	2008-09	2009-10	2010-11
Christiansburg PS	433	444	441	425	438	467	479	467	442	441
Christiansburg ES	412	412	419	435	384	391	436	458	457	423
Belview ES	214	247	249	241	254	245	228	235	246	227
Falling Branch ES	515	530	536	528	558	555	541	549	545	549
Christiansburg MS	762	800	766	760	790	818	840	854	844	808
Christiansburg HS	965	962	974	1,024	1,027	1,079	1,036	1,063	1,075	1,082
Ungraded	6	5	4	4	8	5	7	5	7	9
Grand Total	3,307	3,400	3,389	3,417	3,459	3,560	3,567	3,631	3,616	3,539

Source: Montgomery County Public Schools

Montgomery County Public Schools

Christiansburg Strand Historical Enrollment

Montgomery County Public Schools

Shawsville Strand Historical Enrollment

Following is the Montgomery County Public Schools' Shawsville Strand historical enrollment from the 2001-02 school year to 2010-11.

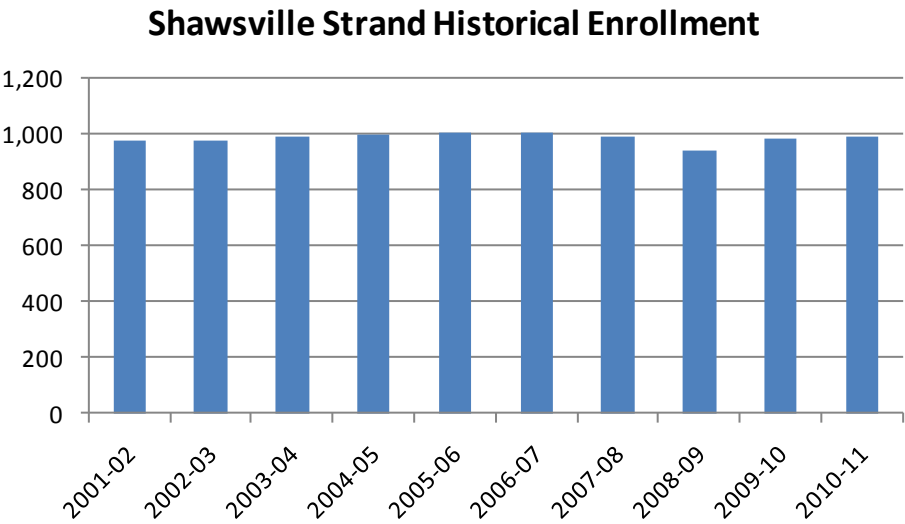
Shawsville Strand Historical Enrollment										
Grade	2001-02	2002-03	2003-04	2004-05	2005-06	2006-07	2007-08	2008-09	2009-10	2010-11
K	62	71	61	68	88	83	70	61	75	77
1	71	72	87	69	71	86	90	78	71	82
2	64	66	64	75	62	59	72	86	75	69
3	88	70	72	64	71	63	55	66	85	76
4	85	90	67	74	68	68	69	63	72	90
5	80	81	97	68	77	70	71	64	67	71
K - 5 Total	450	450	448	418	437	429	427	418	445	465
6	81	80	83	99	66	78	66	72	72	69
7	80	74	78	82	100	71	69	58	82	71
8	76	79	89	79	82	102	73	76	59	76
6 - 8 Total	237	233	250	260	248	251	208	206	213	216
9	73	81	96	103	81	95	121	89	91	75
10	84	75	69	92	87	69	84	96	81	81
11	69	79	65	67	95	87	68	73	81	72
12	63	57	64	57	57	76	77	57	69	75
9 - 12 Total	289	292	294	319	320	327	350	315	322	303
Ungraded	0	2	1	0	0	1	3	3	5	5
Grand Total	976	977	993	997	1,005	1,008	988	942	985	989

Source: Montgomery County Public Schools

School	2001-02	2002-03	2003-04	2004-05	2005-06	2006-07	2007-08	2008-09	2009-10	2010-11
Shawsville ES	241	233	238	209	238	232	235	229	251	0
Elliston-Lafayette ES	209	217	210	209	199	197	192	189	194	0
Eastern Montgomery ES	0	0	0	0	0	0	0	0	0	465
Shawsville MS	237	233	250	260	248	251	208	206	213	216
Eastern Montgomery HS	289	292	294	319	320	327	350	315	322	303
Ungraded	0	2	1	0	0	1	3	3	5	5
Grand Total	976	977	993	997	1,005	1,008	988	942	985	989

Source: Montgomery County Public Schools

Montgomery County Public Schools

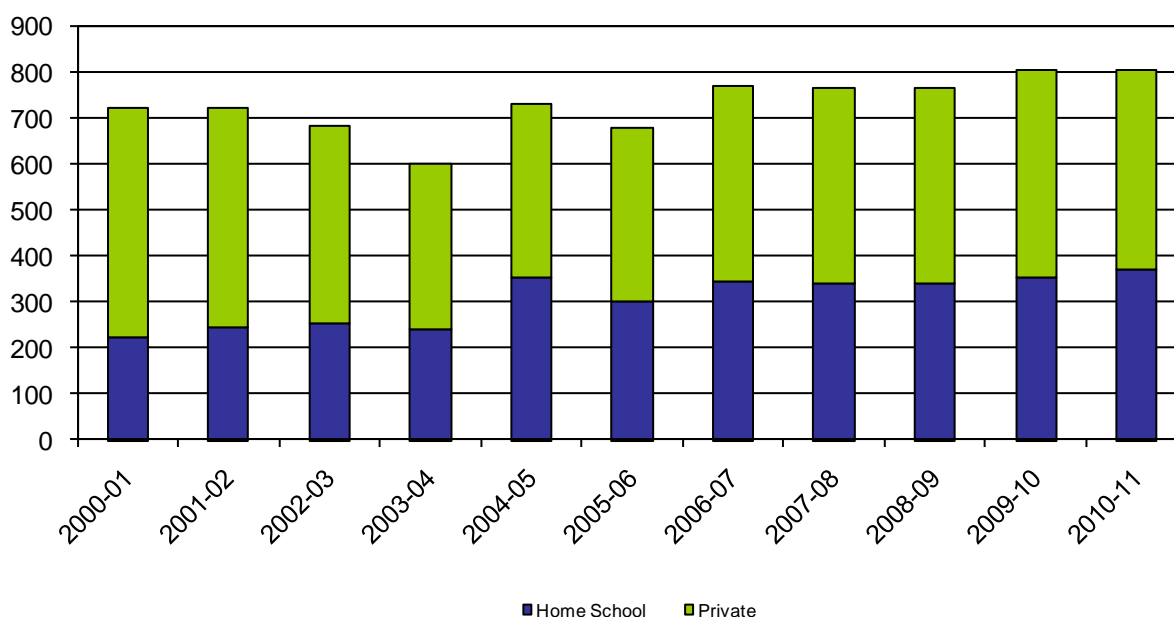


Montgomery County Public Schools

PRIVATE AND HOME-SCHOOLED STUDENTS

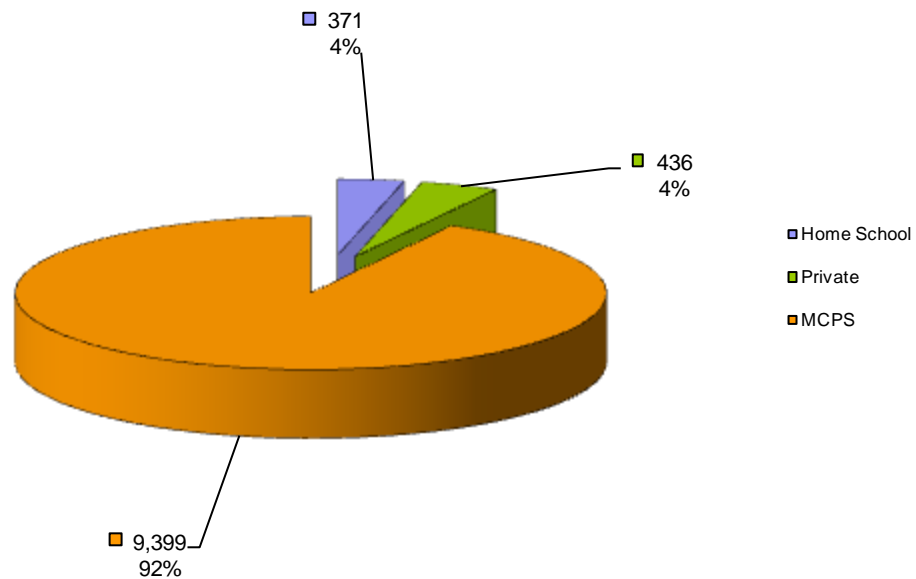
The number of private and home schooled students in Montgomery County peaked in the 2010-11 school year at 807 students. The table and charts below illustrate the private and home-schooled students in Montgomery County.

Non-Public Enrollment			
Year	Home School	Private	Total
2000-01	223	501	724
2001-02	248	474	722
2002-03	256	428	684
2003-04	241	361	602
2004-05	357	375	732
2005-06	304	375	679
2006-07	346	426	772
2007-08	340	427	767
2008-09	341	427	768
2009-10	354	452	806
2010-11	371	436	807
Source: MCPS Students Services			

Non-Public Enrollment

Montgomery County Public Schools

2010-11 Montgomery County Student Breakdown

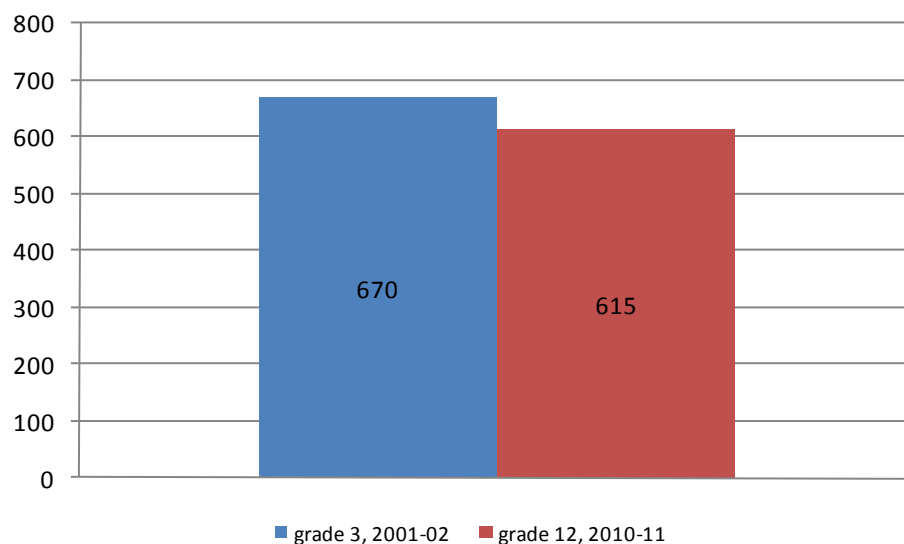


Montgomery County Public Schools

STUDENT MIGRATION AND RETENTION

Substantial numbers of children born in the District leave prior to graduation. Most of these students either move out of the District or switch from public to private schools. As of the 2010-11 school year, there are approximately 8% fewer students in the 12th grade than there were in the 3rd grade in 2001-02, as illustrated in the chart below.

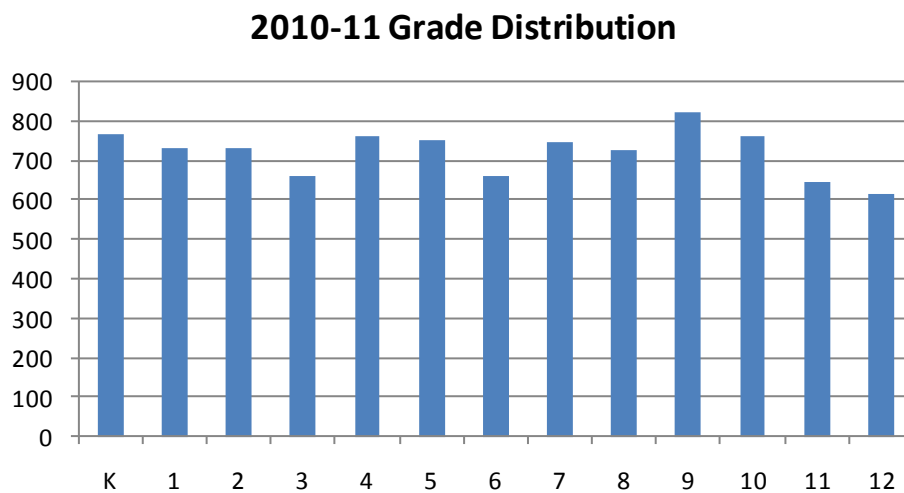
The issue of retention of students is significant in projecting enrollments. There are many issues associated with the phenomenon. The patterns of the past ten years are fairly consistent and as such are incorporated into the projections. If these patterns were to change, these projections should be revisited.



Montgomery County Public Schools

CURRENT STUDENT DISTRIBUTION ACROSS GRADE LEVELS

The following graph illustrates the number of students in each grade level in the Montgomery County Public School District for the 2010-11 school year. The peak enrollment is in the 9th grade with 820 students, the low is in the 12th grade with 615 students.



Montgomery County Public Schools

SURVIVAL RATIOS

The chart below demonstrates the changes in enrollment as students move through the system. Percentages greater than 100 indicate that there are more students than there were in the previous grade the previous year. In other words, there was growth and new students were added to the system. Percentages less than 100 indicate that there was decline or students left the system.

- ▶ Birth to Kindergarten: This ratio indicates the number of children born in the area who attend kindergarten in the District 5 years later. Percentages less than 100% result from movement out of the district, attendance at a non-public or charter school, or residence in another district within the same area.
- ▶ Grades 8-9: The higher than usual percentage often is a result of school district promotion policies. Often in school districts, students are promoted from 8th to 9th grade and after one year in 9th grade do not have sufficient credits to be classified as 10th graders and are counted again as 9th graders the following year. There may also be students who are attending private or charter schools or are home schooled through grade 8 and then attend public schools for high school education.

The following table illustrates the survival ratios used in developing the enrollment projections for the Montgomery County Public Schools.

from	to	birth -> K	K->1	1->2	2->3	3->4	4->5	5->6	6->7	7->8	8->9	9->10	10->11	11->12
2001	2002	86.3%	105.0%	96.0%	99.4%	100.3%	99.3%	99.9%	100.8%	101.5%	109.6%	90.7%	93.1%	93.7%
2002	2003	92.2%	103.6%	98.2%	103.9%	100.9%	104.2%	102.5%	102.4%	104.5%	111.5%	88.2%	88.3%	96.3%
2003	2004	90.3%	99.9%	93.9%	100.0%	100.7%	102.7%	101.9%	102.0%	99.6%	114.1%	91.4%	93.4%	96.0%
2004	2005	94.3%	99.9%	99.2%	100.6%	97.6%	99.3%	100.3%	101.1%	102.4%	113.7%	89.6%	94.1%	94.3%
2005	2006	103.2%	99.6%	96.6%	98.1%	98.4%	101.9%	99.0%	102.4%	100.0%	110.5%	91.9%	93.3%	90.8%
2006	2007	91.9%	101.5%	97.5%	99.4%	103.8%	103.6%	100.9%	102.6%	101.1%	114.6%	90.9%	90.0%	89.8%
2007	2008	89.1%	100.1%	96.5%	102.0%	97.7%	102.2%	100.6%	101.4%	102.7%	114.5%	89.8%	91.1%	89.2%
2008	2009	88.0%	104.9%	96.7%	98.9%	102.0%	100.1%	100.3%	103.0%	101.1%	116.8%	85.2%	92.7%	89.0%
2009	2010	93.2%	99.2%	93.8%	95.2%	97.4%	96.2%	95.5%	99.2%	96.9%	114.2%	86.4%	91.2%	89.4%
	average	92.04%	101.515%	96.48%	99.7%	99.87%	101.0%	100.1%	101.7%	101.1%	113.271%	89.346%	91.915%	92.061%
	standard deviation	4.624%	2.216%	1.682%	2.283%	2.098%	2.390%	1.880%	1.115%	2.015%	2.145%	2.175%	1.784%	2.857%

Montgomery County Public Schools

ENROLLMENT PROJECTIONS

Four sets of district-wide enrollment projections have been developed for the next ten school years. The low, moderate, and high projections were developed based on the cohort survival method. The most likely projection factors in historical trends, birth data, and current housing information. The following defines, in terms of economy and housing, the differences between the four projections.

Low Projection

- Higher inflation/interest rates
- Decline in new housing
- Decline in live births

Moderate Projection [Most Likely]

- Moderate inflation/interest rates
- Moderate level of new housing, slightly less than current activity
- Stagnate number of live births

High Projection

- Low inflation/interest rates
- High level of new housing, slightly more than current activity
- Increase in live births

Based on the decline in new housing over the last two years as well as the population projections for school aged children illustrated on page 13, **DeJONG-HEALY** recommends that the moderate projection be used as the most likely scenario.

The moderate enrollment projections are included for each of the strands. These projections factor in historical data, birth data, and current housing information.

Montgomery County Public Schools

Low Projection

Following is the Montgomery County Public Schools' ten year projected enrollment based on higher inflation/interest rates, declining new housing, and declining live birth counts. This is the low projection based on the cohort survival method. According to this projection, Montgomery County's K-12 enrollment would gradually decrease over the next ten years from 9,399 students in 2010-11 to 9,262 students in 2020-21 for a loss of 137 students.

Montgomery County Public Schools											
Projected Enrollment - Low											
Grade	2010-11 Actual	2011-12	2012-13	2013-14	2014-15	2015-16	2016-17	2017-18	2018-19	2019-20	2020-21
K	765	801	874	809	759	800	800	800	800	800	800
1	733	765	800	872	807	758	799	799	799	799	799
2	729	698	728	762	831	769	722	760	760	760	760
3	660	708	677	706	739	806	746	700	737	737	737
4	761	654	701	671	699	732	798	738	693	730	730
5	753	748	642	688	659	686	718	783	725	680	717
K - 5 Total	4,401	4,374	4,422	4,508	4,494	4,551	4,583	4,580	4,514	4,506	4,543
6	659	738	732	629	674	645	672	703	767	710	666
7	747	667	746	740	636	681	652	680	711	775	718
8	724	740	660	739	733	629	674	645	673	704	768
6 - 8 Total	2,130	2,145	2,138	2,108	2,043	1,955	1,998	2,028	2,151	2,189	2,152
9	820	824	842	751	840	834	716	767	734	765	801
10	764	704	707	722	644	721	715	614	658	630	657
11	644	697	642	645	658	587	657	652	560	600	574
12	615	575	622	573	575	587	524	586	582	500	535
9 - 12 Total	2,843	2,800	2,813	2,691	2,717	2,729	2,612	2,619	2,534	2,495	2,567
Ungraded	25										
Grand Total	9,399	9,319	9,373	9,307	9,254	9,235	9,193	9,227	9,199	9,190	9,262

Source: DeJONG-HEALY

Montgomery County Public Schools
Projected Enrollment - Low



Montgomery County Public Schools

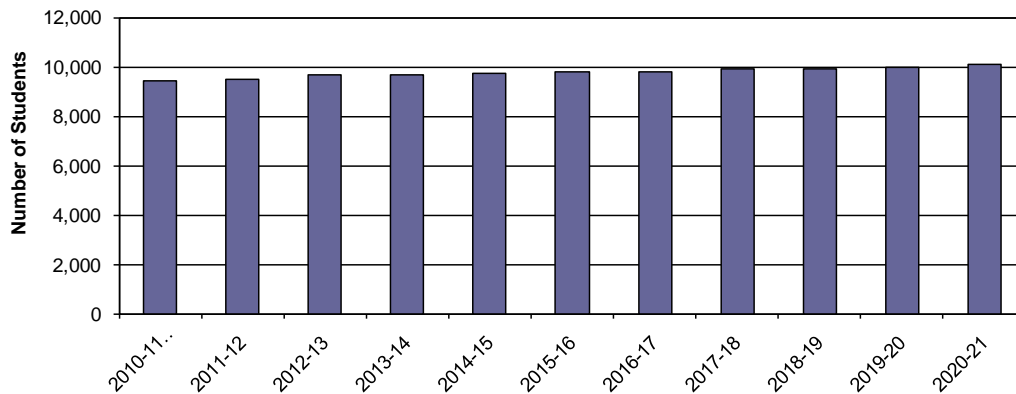
Moderate Projection

Following is the Montgomery County Public Schools' ten year projected enrollment based on most recent historical trends, moderate inflation/interest rates, moderate level of new housing, and a stagnate number of live births. This is the moderate projection based on the cohort survival method. According to this projection, Montgomery County's K-12 enrollment would increase over the next ten years from 9,399 students in 2010-11 to 10,075 students in 2020-21 for a gain of 676 students.

Montgomery County Public Schools Projected Enrollment - Moderate											
Grade	2010-11 Actual	2011-12	2012-13	2013-14	2014-15	2015-16	2016-17	2017-18	2018-19	2019-20	2020-21
K	765	807	880	815	763	806	806	806	806	806	806
1	733	779	818	892	825	775	816	816	816	816	816
2	729	708	751	789	861	797	747	788	788	788	788
3	660	723	700	742	780	850	786	738	779	779	779
4	761	658	715	694	737	773	843	781	733	772	772
5	753	766	661	719	698	740	777	847	784	736	774
K - 5 Total	4,401	4,441	4,525	4,651	4,664	4,741	4,775	4,776	4,706	4,697	4,735
6	659	749	762	656	713	694	736	772	842	779	730
7	747	672	763	773	666	725	705	747	785	853	791
8	724	754	677	769	777	670	729	709	751	789	859
6 - 8 Total	2,130	2,175	2,202	2,198	2,156	2,089	2,170	2,228	2,378	2,421	2,380
9	820	842	871	783	891	900	774	843	822	867	912
10	764	724	740	768	692	786	794	685	744	724	766
11	644	707	668	682	708	636	723	730	631	686	666
12	615	580	634	601	614	636	571	649	657	566	616
9 - 12 Total	2,843	2,853	2,913	2,834	2,905	2,958	2,862	2,907	2,854	2,843	2,960
Ungraded	25										
Grand Total	9,399	9,469	9,640	9,683	9,725	9,788	9,807	9,911	9,938	9,961	10,075

Source: DeJONG-HEALY

Montgomery County Public Schools
Projected Enrollment - Moderate



Montgomery County Public Schools

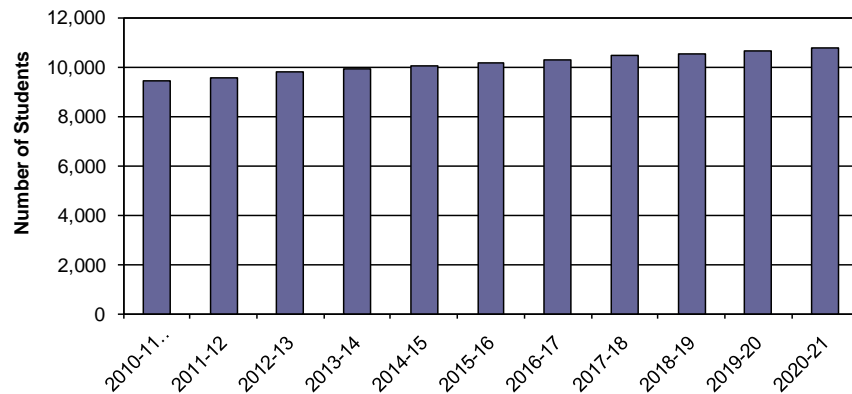
High Projection

Following is the Montgomery County Public Schools' ten year projected enrollment based on low inflation and interest rates, a high level of new housing or slightly more than current activity, and an increase in live birth counts. This is the high projection based on the cohort survival method. According to this projection, Montgomery County's K-12 enrollment increase over the next ten years from 9,399 students in 2010-11 to 10,769 students in 2020-21 for a gain of 1,370 students.

Montgomery County Public Schools Projected Enrollment - High											
Grade	2010-11 Actual	2011-12	2012-13	2013-14	2014-15	2015-16	2016-17	2017-18	2018-19	2019-20	2020-21
K	765	810	883	817	767	808	808	808	808	808	808
1	733	785	831	906	838	787	829	829	829	829	829
2	729	712	762	807	879	814	764	805	805	805	805
3	660	730	713	763	807	880	815	765	806	806	806
4	761	668	739	721	772	817	890	824	774	815	815
5	753	777	682	754	736	787	833	908	841	789	831
K - 5 Total	4,401	4,482	4,610	4,768	4,799	4,893	4,939	4,939	4,863	4,852	4,894
6	659	758	781	686	758	740	792	838	914	846	794
7	747	675	776	800	702	776	758	811	858	935	866
8	724	760	687	789	813	714	789	771	825	873	951
6 - 8 Total	2,130	2,193	2,244	2,275	2,273	2,230	2,339	2,420	2,597	2,654	2,611
9	820	837	878	793	911	939	824	911	890	952	1,008
10	764	732	746	783	707	813	838	736	813	794	850
11	644	703	674	687	721	651	748	771	677	748	730
12	615	583	636	609	621	652	588	676	697	612	676
9 - 12 Total	2,843	2,855	2,934	2,872	2,960	3,055	2,998	3,094	3,077	3,106	3,264
Ungraded	25										
Grand Total	9,399	9,530	9,788	9,915	10,032	10,178	10,276	10,453	10,537	10,612	10,769

Source: DeJONG-HEALY

Montgomery County Public Schools
Projected Enrollment - High



Montgomery County Public Schools

Auburn Strand Moderate Projected Enrollment

Following is the Montgomery County Public Schools' Auburn Strand ten year moderate projected enrollment from the 2010-11 school year to 2020-21. Over the next ten years, the Auburn Strand's moderate enrollment is expected to increase by 87 students.

Auburn Strand Projected Enrollment - Moderate											
Grade	2010-11 Actual	2011-12	2012-13	2013-14	2014-15	2015-16	2016-17	2017-18	2018-19	2019-20	2020-21
K	90	101	110	102	95	101	101	101	101	101	101
1	92	92	102	112	103	97	102	102	102	102	102
2	87	91	91	101	110	102	95	101	101	101	101
3	84	85	88	88	98	106	98	92	97	97	97
4	88	86	86	89	89	99	108	100	94	99	99
5	120	91	88	88	92	91	102	111	102	96	101
K - 5 Total	561	546	565	580	587	596	606	607	597	596	601
6	99	119	90	87	87	91	90	101	110	102	95
7	96	104	124	94	91	91	95	94	105	114	106
8	85	100	107	129	97	94	94	98	98	109	118
6 - 8 Total	280	323	321	310	275	276	279	293	313	325	319
9	106	100	117	125	150	113	110	110	114	114	127
10	107	98	91	107	115	138	104	101	101	105	104
11	89	96	87	81	95	102	123	92	90	90	93
12	86	77	82	75	70	82	88	105	79	77	77
9 - 12 Total	388	371	377	388	430	435	425	408	384	386	401
Ungraded	5										
Grand Total	1,234	1,240	1,263	1,278	1,292	1,307	1,310	1,308	1,294	1,307	1,321

Source: DeJONG-HEALY

School	2010-11 Actual	2011-12	2012-13	2013-14	2014-15	2015-16	2016-17	2017-18	2018-19	2019-20	2020-21
Auburn ES	561	546	565	580	587	596	606	607	597	596	601
Auburn MS	280	323	321	310	275	276	279	293	313	325	319
Auburn HS	388	371	377	388	430	435	425	408	384	386	401
Ungraded	5										
Grand Total	1,234	1,240	1,263	1,278	1,292	1,307	1,310	1,308	1,294	1,307	1,321

Source: DeJONG-HEALY

Montgomery County Public Schools

Blacksburg Strand Moderate Projected Enrollment

Following is the Montgomery County Public Schools' Blacksburg Strand ten year moderate projected enrollment from the 2010-11 school year to 2020-21. Over the next ten years, the Blacksburg Strand's moderate enrollment is expected to increase by 302 students.

Blacksburg Strand											
Projected Enrollment - Moderate											
Grade	2010-11 Actual	2011-12	2012-13	2013-14	2014-15	2015-16	2016-17	2017-18	2018-19	2019-20	2020-21
K	317	319	348	322	302	319	319	319	319	319	319
1	276	323	325	354	328	308	324	324	324	324	324
2	289	265	310	312	340	315	295	311	311	311	311
3	276	288	264	308	310	338	313	294	310	310	310
4	303	277	289	265	309	311	339	314	295	310	310
5	274	302	276	288	264	308	310	338	313	294	309
K - 5 Total	1,735	1,774	1,812	1,849	1,853	1,899	1,900	1,900	1,872	1,868	1,883
6	248	270	298	272	283	260	304	305	333	308	289
7	302	250	273	300	274	286	262	306	308	335	311
8	276	302	250	272	299	273	285	261	305	307	334
6 - 8 Total	826	822	821	844	856	819	851	872	946	950	934
9	301	299	327	270	294	324	296	308	283	330	332
10	292	277	275	300	249	271	298	272	284	260	304
11	242	276	261	259	283	234	255	281	257	267	245
12	235	218	248	235	234	255	211	230	253	231	241
9 - 12 Total	1,070	1,070	1,111	1,064	1,060	1,084	1,060	1,091	1,077	1,088	1,122
Ungraded	6										
Grand Total	3,637	3,666	3,744	3,757	3,769	3,802	3,811	3,863	3,895	3,906	3,939

Source: DeJONG-HEALY

School	2010-11 Actual	2011-12	2012-13	2013-14	2014-15	2015-16	2016-17	2017-18	2018-19	2019-20	2020-21
Gilbert Linkous ES	353	361	368	376	377	387	388	388	381	380	384
Harding Ave. ES	268	274	280	286	286	293	293	293	289	289	291
Kipps ES	509	520	532	542	544	557	557	557	549	548	552
Margaret Beeks ES	404	413	422	431	431	442	442	442	436	435	438
Price's Fork ES	201	206	210	214	215	220	220	220	217	216	218
Blacksburg MS	826	822	821	844	856	819	851	872	946	950	934
Blacksburg HS	1,070	1,070	1,111	1,064	1,060	1,084	1,060	1,091	1,077	1,088	1,122
Ungraded	6										
Grand Total	3,637	3,666	3,744	3,757	3,769	3,802	3,811	3,863	3,895	3,906	3,939

Source: DeJONG-HEALY

Montgomery County Public Schools

Christiansburg Strand Moderate Projected Enrollment

Following is the Montgomery County Public Schools' Christiansburg Strand ten year moderate projected enrollment from the 2010-11 school year to 2020-21. Over the next ten years, the Christiansburg Strand's moderate enrollment is expected to increase by 171 students.

Christiansburg Strand											
Projected Enrollment - Moderate											
Grade	2010-11 Actual	2011-12	2012-13	2013-14	2014-15	2015-16	2016-17	2017-18	2018-19	2019-20	2020-21
K	281	311	339	314	294	310	310	310	310	310	310
1	283	278	307	334	309	290	306	306	306	306	306
2	284	273	267	295	322	298	280	295	295	295	295
3	224	281	269	264	291	318	294	276	291	291	291
4	280	213	266	255	250	276	301	279	262	276	276
5	288	282	214	268	257	252	278	303	281	263	277
K - 5 Total	1,640	1,638	1,662	1,730	1,723	1,744	1,769	1,769	1,745	1,741	1,755
6	243	287	281	213	267	256	251	277	302	279	262
7	278	250	295	289	219	274	263	258	285	310	287
8	287	279	251	296	289	220	275	264	258	285	311
6 - 8 Total	808	816	827	798	775	750	789	799	845	874	860
9	338	350	339	305	360	352	267	334	321	314	347
10	284	283	293	284	255	301	295	224	280	268	263
11	241	264	263	272	264	237	279	273	208	260	249
12	219	219	240	239	247	239	215	254	249	189	236
9 - 12 Total	1,082	1,116	1,135	1,100	1,126	1,129	1,056	1,085	1,058	1,031	1,095
Ungraded	9										
Grand Total	3,539	3,570	3,624	3,628	3,624	3,623	3,614	3,653	3,648	3,646	3,710
Source: DeJONG-HEALY											
School	2010-11 Actual	2011-12	2012-13	2013-14	2014-15	2015-16	2016-17	2017-18	2018-19	2019-20	2020-21
Christiansburg PS	441	449	476	492	482	467	466	474	474	474	474
Christiansburg ES	423	414	400	420	426	452	466	458	445	443	451
Belview ES	227	227	230	239	238	241	245	245	242	241	243
Falling Branch ES	549	548	556	579	577	584	592	592	584	583	587
Christiansburg MS	808	816	827	798	775	750	789	799	845	874	860
Christiansburg HS	1,082	1,116	1,135	1,100	1,126	1,129	1,056	1,085	1,058	1,031	1,095
Ungraded	9										
Grand Total	3,539	3,570	3,624	3,628	3,624	3,623	3,614	3,653	3,648	3,646	3,710
Source: DeJONG-HEALY											

Montgomery County Public Schools

Shawsville Strand Moderate Projected Enrollment

Following is the Montgomery County Public Schools' Shawsville Strand ten year moderate projected enrollment from the 2010-11 school year to 2020-21. Over the next ten years, the Shawsville Strand's moderate enrollment is expected to increase by 116 students.

Shawsville Strand											
Projected Enrollment - Moderate											
Grade	2010-11 Actual	2011-12	2012-13	2013-14	2014-15	2015-16	2016-17	2017-18	2018-19	2019-20	2020-21
K	77	76	83	77	72	76	76	76	76	76	76
1	82	86	84	92	85	80	84	84	84	84	84
2	69	79	83	81	89	82	77	81	81	81	81
3	76	69	79	82	81	88	81	76	81	81	81
4	90	82	74	85	89	87	95	88	82	87	87
5	71	91	83	75	85	89	87	95	88	83	87
K - 5 Total	465	483	486	492	501	502	500	500	492	492	496
6	69	73	93	84	76	87	91	89	97	90	84
7	71	68	71	90	82	74	85	89	87	94	87
8	76	73	69	72	92	83	75	86	90	88	96
6 - 8 Total	216	214	233	246	250	244	251	264	274	272	267
9	75	93	88	83	87	111	101	91	104	109	106
10	81	66	81	77	73	76	97	88	79	91	95
11	72	71	57	70	66	63	66	84	76	69	79
12	75	66	64	52	63	60	57	60	76	69	62
9 - 12 Total	303	296	290	282	289	310	321	323	335	338	342
Ungraded	5										
Grand Total	989	993	1,009	1,020	1,040	1,056	1,072	1,087	1,101	1,102	1,105

Source: DeJONG-HEALY

School	2010-11 Actual	2011-12	2012-13	2013-14	2014-15	2015-16	2016-17	2017-18	2018-19	2019-20	2020-21
Eastern Montgomery ES	465	483	486	492	501	502	500	500	492	492	496
Shawsville MS	216	214	233	246	250	244	251	264	274	272	267
Eastern Montgomery HS	303	296	290	282	289	310	321	323	335	338	342
Ungraded	5										
Grand Total	989	993	1,009	1,020	1,040	1,056	1,072	1,087	1,101	1,102	1,105

Source: DeJONG-HEALY

Montgomery County Public Schools

CONCLUSION

As with any projection, the District should pay close attention to live birth counts, enrollment in elementary schools, and any population and housing growth. Each of these factors will have an impact on future student enrollment.

DeJONG-HEALY is pleased to have had the opportunity to provide the District with enrollment projection services. We hope this document will provide the necessary information to make informed decisions about the future of the Montgomery County Public Schools.